



**भारतीय उष्णदेशीय मौसम विज्ञान संस्थान**  
**INDIAN INSTITUTE OF TROPICAL METEOROLOGY**  
 (पृथ्वी विज्ञान मंत्रालय का स्वायत्त संस्थान, भारत सरकार के अधीन)  
 (An Autonomous Institute of the Ministry of Earth Sciences, Govt. of India)

सं.डब्ल्यूएस/ No. **WS:50/2010/81/2**  
 मेसर्स/ M/s.

प्रिय महोदय,/ Dear Sirs,

दिनांक 21.04.2010 की पूछताछ सं. **WS:50/2010/81/2** की अनुक्रिया में दिनांक 7.5.2010 तक लिफाफे पर निवेदित दर सूची अंकित कर मुहरबंद निविदा निम्नलिखित भंडारों की आपूर्ति के लिए संस्थान द्वारा दिनांक 7.5.2010 के 18.00 बजे तक आमंत्रित किया जाता है जिसे दूसरे दिन 15.00 बजे खोला जाएगा।

Quotation in sealed cover superscribed there on Quotation due on **07.05.2010** in response to Enquiry No. **WS:50/2010/81/2** dated **21.04.2010** are invited for the supply of under-mentioned stores so as to reach this institute latest by 18-00 hours on **07.05.2010** which will be opened on the next day at 15-00 hours.

सामान्यतः खोलने के दिनांक से कम से कम 60 दिनों की अवधि तक यह निवेदित दरसूची वैध रहेगी।  
 The quotation shall normally remain valid for a minimum period of 60 days from the date of opening

इस पृष्ठ की दूसरी और छपे अनुदेशों को ध्यान में रख कर निवेदित दरसूची भरी जाएगी।

The quotation shall be filled in with the consideration to the instruction printed overleaf.

क्रम सं. Sr. No.	भंडार का विवरण/Description of Stores	इकाई/ Unit	मात्रा/ Quantity
01.	<p style="text-align: center;"><b>Specification of antenna cage for X-band radar system</b></p> <p><b>A. Fabrication, supply and installation of antenna cage</b> Kindly refer the drawing No. (EEC-132996-100) and quote accordingly. The structure should be galvanised.</p> <p><b>B. Covering from all four sides with Aluminium sheet &amp; logo on 2 sides with proper ventilation</b></p> <p><b>C. Top to be designed &amp; fabricated for closure mechanically.</b></p> <p><b>D. Fabrication, supply and installation of Pedestal mounting plates</b></p> <p>Kindly refer to the drawing No. (EEC-133464-100) and quote accordingly. The plates should be powder coated.</p> <p><b>E. The entire structure is to be installed on flat bed trailer.</b>Note:</p> <p>a. Drawings may be obtained from website: <a href="http://www.tropmet.res.in">www.tropmet.res.in</a> under tenders in Pdf form.            b. Job should be completed and delivered before 31/5/2010.</p>	No.1	1 No.

- Note:-**
- (1) **Enquiry Letter No. and due date** should be mentioned on the top of envelope.
  - (2) If above item is available on **Rate Contract** basis, then please specify accordingly in the quotation. Also enclose Rate Contract copy.
  - (3) Technical literature & pamphlet if any, may please be enclosed.
  - (4) Quotation by fax will not be considered.

एस.टी./सीएसटी/आदि के लिए संस्थान

कोई रियायती फार्म नहीं दे सकता।

This Institute is unable to furnish any

Concessional form for S.T / C.S.T. / etc.

भवदीय/ Yours faithfully

कार्यक्रम प्रबंधक कार्यशाला/Program Manager Workshop  
 कृते निदेशक/for Director

तार : ट्रॉपमेट, पुणे Grams : TROPMET, PUNE

फैक्स : Fax : (020) 25893825 दूरभाष : Telephone : 25893600/25893675-81

डॉ. होमी भाभा मार्ग, पाषाण / Dr. Homi Bhabha Road, Pashan, पुणे/ Pune-411 008 (भारत/India)

# निविदा प्रस्ताव के लिये अनुदेश / INSTRUCTIONS TO TENDER

1. नियत तारीख के बाद प्राप्त दर सूची पर विचार नहीं किया जाएगा।  
Quotation received after the due date will not be considered.
2. दर सूची सुवाच्य रूप में भरी जानी चाहिये और शब्दों पर शब्द / सुधार, काटछांट विलोपन यदि हो तो उनको सटीक अनुप्रमाणित करना चाहिये और आपके शीर्षपत्र पर होना चाहिए।  
Quotation must be filled in legibly and overwriting/corrections, erasures etc. if any, must be duly attested, and ON YOUR LETTER HEAD ONLY.
3. पूछताछ पत्र में बताई इकायों के अनुसार दर सूचित किया जाना चाहिये। विशेष रूप से उल्लिखित इकाइयों से अलग इकाइयों पर यदि दर बताई जा रही है तो इन इकायों के सम्बन्ध का विवरण दिया जाएगा।  
The rates shall quoted according to the units indicated in the enquiry letter. When the rates are quoted in units different from those specified, the relation between the units shall be furnished.
4. निवेदित भण्डार अधिमाम्य रूप से तत्सम्बन्धित भारतीय मानक विनिर्देश के अनुसार होना चाहिए।  
The Stores offered shall preferably be according to the relevant Indian Standard Specification.
5. निवेदित दर सूची में सुपूर्दगी की सही अवधि तथा सुपूर्दगी की शर्तें बताई जानी चाहिए।  
The exact delivery period and terms of delivery shall invariably be mentioned in the quotation.
6. “पाषाण में इस संस्तान भवन से सुपूर्दगी। (स्थानिक फर्मों के लिए) और “एफ ओ आर पुणे” (बाहर गांव के फर्मों के लिए) सुपूर्दगी” के आधार पर निवेदित दरों को वरीय माना जाएगा।  
preference shall be given to rates quoted as delivery at this Institute premises at Pashan (for local firms) and as FOR Pune (for outstation firms)
7. दरों में वरीय रूप से सब प्रभार कर ड्युटी आदि में समाविष्ट करना चाहिए साथ ही इन प्रभारों को सुस्पष्ट और पृतक दिखाया जाना चाहिए।  
The rates preferably include all charges, taxes, duties etc., also these charges shall be shown distinctly and separately.
8. विक्री कर की रियायत दर के लिए फार्म (डी) या फार्म (ए.एफ.) जो भी उपयुक्त है वह संस्थान दे नहीं सकेगा।  
The Institute will not be in position to furnish form (D) or form (AF) as the case may be for concessional rate of Sales Tax
9. रकम का भुगतान ३० दिनों के अंदर किया जाएगा।  
Payment will be made within 30 days.
10. पूर्ति के आदेश जारी किये जाने के बाद आदेश में दर्शायी गयी-अवधि तक पूरी सुपूर्दगी की जानी चाहिए। रद्द सामग्री को बदलने में असफल होने पर आदेश बिना पूर्व सूचना से रद्द किया जा सकता है, और आगे जोखिम और लागत पर अन्य स्थान से सामग्री प्राप्त की जायेगी।  
An order for supply when placed, must be completed in full within the delivery period indicated on the order. Failure to supply or replace the rejected materials if any, will render the order liable to be cancelled without notice and the material will be procured elsewhere at your risks and cost.
11. ऊपर बताए अनुदेशों को पूर्ति न करनेवाली दर सूचियों पर विचार नहीं किया जाएगा।  
Quotations, not fulfilling the above instructions, are not likely to be considered.
12. किसी निविदा दर सूची या उसके अंश को कारण नहीं बताते हुए स्वीकृत अथवा अस्वीकृत करने का संस्थान अधिकार रखता है।  
The Institute reserves the right to accept or reject any quotation or part thereof without assigning any reason there of.
13. प्रतिभूति पूर्तिकर्ता यह प्रतिभूति १२ महिनो की अवधि के लिए देगा कि पूर्ति के किये जानेवाले माल, कारीगरी, माल और विनिर्माण की सब त्रुटियाँ और दोषों से मुक्त हो, उच्च कोटि के हो और संस्थापित और सामान्य रूप से स्वीकृत मानको के साथ मिलते हो, विशेष विवरण की पुष्टी करते हो और यदि प्रचलित होते हो तो सटीक ढंग से प्रचलित होना चाहिए।  
Warranty : The supplier shall give a warranty for a period of 12 months to the effect that the materials supplied shall free from all defects and faults in material, workmanship and manufacture shall be of the highest grade and consistant with the established and generally accepted standards shall be inconfirmatory with the specifications and shall be if operable operate properly.

**नियम और शर्तें (ज़ारी)**  
**Terms and Conditions (contd.)**

14. दर पत्र में निम्नांकित बातों के संदर्भ में स्पष्ट जानकारी दी जानी आवश्यक है जैसे कि यूनिट कीमत, विक्री कर, परिवहन, संक्रमणकालीन बीमा, स्थापित करने का खर्च और एक वर्ष की उसी जगह की वॉरंटी । विक्री कर में कोई माफी या छूट मिलने के बारे में संस्थान कोई प्रमाणपत्र ज़ारी नहीं करेगा । अपूरी जानकारी देनेवाले दरपत्रोंके बारे में कोई विचार नहीं किया जाएगा तथा रद्द किया जायेगा ।  
**Quotations must clearly indicate the features offered Unit Price[ Sales Tax, Transport, Transit Insurance, Installation charges and one year on-site warranty. Institute cannot furnish any certificate for exemption or reduction in Sales Tax etc. Incomplete Quotation will not be considered and rejected.**
15. अग्रिम का भुगतान नहीं किया जाएगा ।  
**No advance can be paid.**
16. केन्द्रीय उत्पाद शुल्क कर के वेतन से संस्थान को छूट प्राप्त हुई और अगर आवश्यक हो तो, अनुरोध पर विमोचन प्रमाणपत्र ज़ारी किया जायेगा ।  
**Institute is exempted from the payment of Central Excise duty and exemption certificate will be issued on requested, if required.**
17. अगर कोई ऑक्ट्रॉय कर का भुगतान हो तो, उसका कृपया अलग उल्लेख किया जाए ।  
**Octroi payment if any, the same may please be shown separately.**
18. भुगतान नियम निम्न प्रकार से है :-  
Payment terms will be as follows :  
i) सन्तोषजनक प्रतिष्ठापना के बाद **90%** भुगतान ।  
**90% Payment after satisfactory installation.**  
ii) राष्ट्रीयकृत बैंक द्वारा बैंक गारंटी का प्रत्यक्ष क्रियान्वयन होने के पश्चात् **10%** का भुगतान होगा, यह वॉरंटी अवधि के समापन तक लागू रहेगी, जिसकी अवधि बढ़ाई जा सकती है ।  
**10% Payment after execution of Bank Guarantee from a Nationalized Bank which will be valid till the expiry of warranty period including extension if any.**
19. उपकरण स्थापित करने के पश्चात् स्वीकृति की सभी मानके जाँच पड़ताल की जाएगी । स्वीकृति के ऐसे परीक्षण पूरे हो जाने के बाद ही संबंधित उपकरण का स्वीकार किया जायेगा ।  
**All standard acceptance tests will be carried out after installation the equipment will be taken over only after successful completion of acceptance tests.**
20. उसकी कीमत स्थिर और अपरिवर्तनीय होनी चाहिए और उसमें कच्चा माल और घटकों की लागत में वृद्धि होने पर या रूपया-विदेशी मुद्रा के विनिमय दर में बदलाव आने पर भी कोई परिवर्तन नहीं होगा ।  
**The price should be firm and irrevocable and not subject to any change whatsoever, even due to increase in the cost of raw materials and components and Rupee-foreign exchange conversion rate.**
21. उपकरण प्राप्त होने के पश्चात् एक महिने की अवधि में स्थापना प्रक्रिया पूरी होनी चाहिए ।  
**The installation process should be completed within one month from the date of delivery.**

THE TECHNICAL DATA AND INFORMATION (HEREINAFTER "TECHNICAL DATA") CONTAINED HEREIN IS HIGHLY CONFIDENTIAL AND PROPRIETARY IN NATURE AND IS THE SOLE AND EXCLUSIVE INTELLECTUAL PROPERTY OF THE ENTERPRISE ELECTRONICS CORPORATION (EEC). ANY COMPANY, ORGANIZATION, ENTITY OR INDIVIDUAL WHO SEES TO BENEFIT FROM THE USE OF THIS TECHNICAL DATA MUST AGREE TO HOLD SAID INFORMATION IN STRICT CONFIDENCE. USER AGREES THAT, UNLESS REQUIRED BY LAW, IT SHALL NOT DISCLOSE OR MAKE THE TECHNICAL DATA AVAILABLE IN ANY FORM TO A THIRD PARTY WITHOUT THE SPECIFIC EXPRESS WRITTEN CONSENT OF EEC. WITH REGARD TO EACH SUCH THIRD PARTY, USER AGREES TO TAKE ALL NECESSARY STEPS TO ENSURE THAT INTELLECTUAL PROPERTY IS NOT DISCLOSED OR DISSEMINATED BY HIS DIRECTORS, OFFICERS, EMPLOYEES, REPRESENTATIVES OR AGENTS IN VIOLATION OF THIS CONDITION. THE USER OF THE TECHNICAL DATA CONTAINED HEREIN AGREES TO DEFEND, HOLD HARMLESS, INDEMNIFY AND HOLD HARMLESS EEC, ITS DIRECTORS, OFFICERS AND EMPLOYEES, PARENT COMPANY, AFFILIATE COMPANIES AND/OR SUBSIDIARIES, ITS SUCCESSORS AND ASSIGNS, CUSTOMERS AND USERS OF ITS PRODUCT(S) AGAINST ALL SUITS AT LAW OR IN TORT AND FROM DAMAGES, CLAIMS AND DEMANDS ARISING OUT OF THE DEATH OR INJURY TO ANY PERSON OR DAMAGE OF ANY KIND TO USER'S DIRECTORS, OFFICERS, EMPLOYEES, AGENTS OR PROPERTY AS A RESULT OF USER'S USE, MISUSE, ASSUMPTIONS OR INTERPRETATIONS OF THE TECHNICAL DATA CONTAINED HEREIN. EEC HAS MADE ITS BEST EFFORT TO OFFER THE MOST CURRENT, CORRECT AND CLEARLY EXPRESSED INFORMATION POSSIBLE. NEVERTHELESS, INADVERTENT ERRORS IN INFORMATION MAY OCCUR, IN PARTICULAR, BUT WITHOUT LIMITATION TO THE ABOVE, EEC DISCLAIMS ANY RESPONSIBILITY FOR TYPOGRAPHICAL ERRORS OR PUNCTUATION ERRORS CONTAINED HEREIN. EEC IS A REGISTERED TRADEMARK OF EEC. SIDPOL IS A REGISTERED TRADEMARK OF EEC. EDGE IS A TRADEMARK OF EEC. STARDRIVE IS A TRADEMARK OF EEC. EEP-8 IS A TRADEMARK OF EEC. SMALL TANGOR DUAL POLARIZATION RADAR SYSTEMS OFFERED BY EEC ARE COVERED BY ONE OR MORE OF THE FOLLOWING PATENTS: US 6,806,763; US 7,049,897; US 6,803,878; US 7,438,888; 13041 (OAP1 REGION); 13040 (OAP1 REGION); 13894 (OAP1 REGION); 009249 (EURASIA); 009249 (EURASIA). VARIOUS ADDITIONAL DOMESTIC AND INTERNATIONAL PATENTS HAVE BEEN APPLIED FOR.

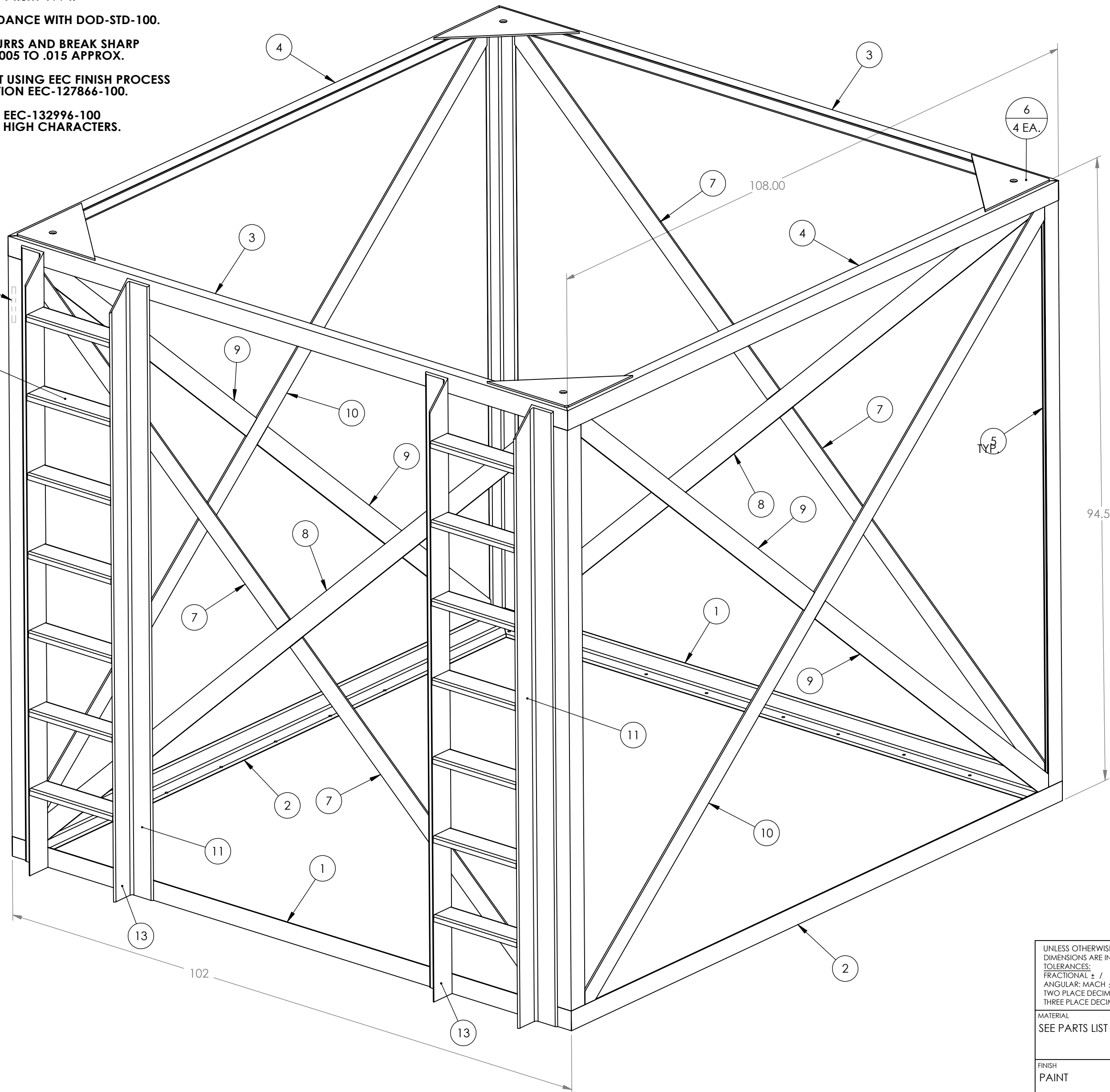
**DRAWING INCOMPLETE  
WITHOUT FOLLOWING EO'S**

REVISIONS

REV	DESCRIPTION	DATE	APPROVED

**NOTES: UNLESS OTHERWISE SPECIFIED**

1. INTERPRET DIMENSIONS & TOLERANCES PER ASME Y14.5M-1994.
2. IN ACCORDANCE WITH DOD-STD-100.
3. REMOVE BURRS AND BREAK SHARP EDGES TO .005 TO .015 APPROX.
4. FINISH PART USING EEC FINISH PROCESS SPECIFICATION EEC-127866-100.
5. LABEL PART EEC-132996-100 USING .125 HIGH CHARACTERS.



FIND NO.	COMPONENT	DESCRIPTION	QTY.
1	132996-99	3/8 X 3 X 3 STEEL ANGLE	2
2	132996-98	3/8 X 3 X 3 STEEL ANGLE	2
3	132996-97	3/8 X 2 X 3 STEEL ANGLE	2
4	132996-96	3/8 X 2 X 3 STEEL ANGLE	2
5	132996-95	3/8 X 3 X 3 STEEL ANGLE	4
6	132996-94	1/4 X 48 X 144 HRS	4
7	132996-93	1/4 X 48 X 144 HRS	4
8	132996-92	1/4 X 48 X 144 HRS	2
9	132996-91	1/4 X 48 X 144 HRS	2
10	132996-90	1/4 X 48 X 144 HRS	4
11	132996-89	1/4 X 4 X 4 STEEL ANGLE	2
12	132996-88	3/16 HOT ROLLED TREAD PLATE	14
13	132996-87	1/4 X 4 X 4 STEEL ANGLE	2

UNLESS OTHERWISE SPECIFIED:  
DIMENSIONS ARE IN INCHES  
TOLERANCES:  
FRACTIONAL ± /  
ANGULAR: MACH ± 1/2°  
TWO PLACE DECIMAL ± .03  
THREE PLACE DECIMAL ± .010

MATERIAL:  
SEE PARTS LIST

FINISH:  
PAINT

DRAFTSMAN: E. RIVERS  
DATE: 10/13/09  
WORK ORDER NUMBER: A09-0319  
CHECKER: D BRASWELL  
DESIGN ENGINEER: D BRASWELL  
PROJ ENGINEER: E LAWRENCE  
QUALITY ASSURANCE: S FREE  
CONFIGURATION: B STEWART  
DRAFTSMAN POSTED BY: L HELVIN

**EEC** ENTERPRISE ELECTRONICS CORPORATION  
ENTERPRISE, ALABAMA 36330

**FRAME WORK, LIFT SUPPORT**

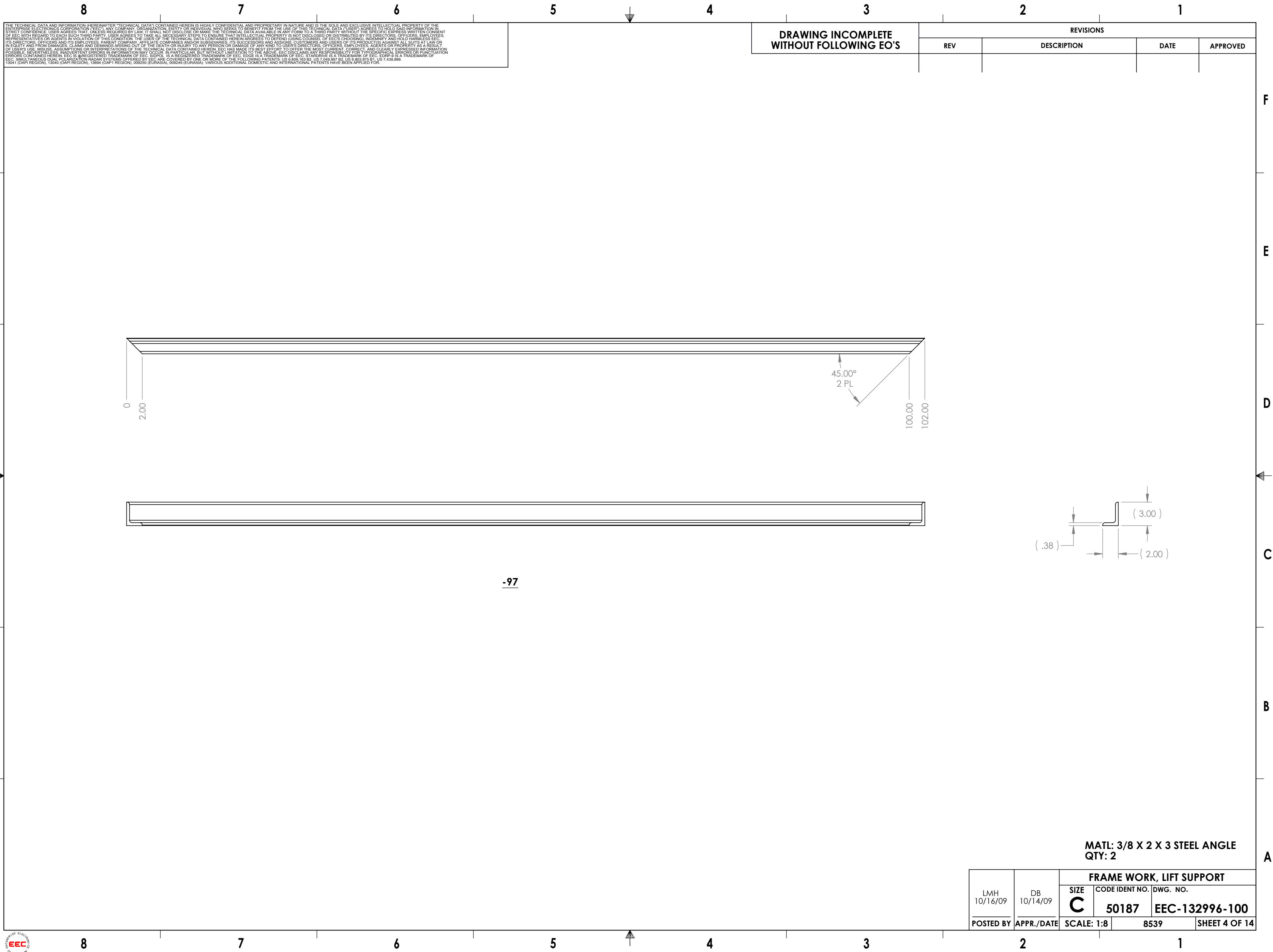
SIZE	CODE IDENT NO.	DWG. NO.
<b>C</b>	<b>50187</b>	<b>EEC-132996-100</b>

SCALE: 1:12      8539      SHEET 1 OF 14









THE TECHNICAL DATA AND INFORMATION (HEREINAFTER "TECHNICAL DATA") CONTAINED HEREIN IS HIGHLY CONFIDENTIAL AND PROPRIETARY IN NATURE AND IS THE SOLE AND EXCLUSIVE INTELLECTUAL PROPERTY OF THE ENTERPRISE ELECTRONICS CORPORATION (EEC), ANY COMPANY, ORGANIZATION, ENTITY OR INDIVIDUAL WHO SEES TO BENEFIT FROM THE USE OF THIS TECHNICAL DATA. USER AGREES TO HOLD SAID INFORMATION IN STRICT CONFIDENCE. USER AGREES THAT, UNLESS REQUIRED BY LAW, IT SHALL NOT DISCLOSE OR MAKE THE TECHNICAL DATA AVAILABLE IN ANY FORM TO A THIRD PARTY WITHOUT THE SPECIFIC EXPRESS WRITTEN CONSENT OF EEC. WITH REGARD TO EACH SUCH THIRD PARTY, USER AGREES TO TAKE ALL NECESSARY STEPS TO ENSURE THAT INTELLECTUAL PROPERTY IS NOT DISCLOSED OR OTHERWISE IMPAIRED BY THE DIRECTORS, EMPLOYEES, REPRESENTATIVES OR AGENTS IN VIOLATION OF THIS CONDITION. THE USER OF THE TECHNICAL DATA CONTAINED HEREIN AGREES TO DEFEND (USING COURSES OF EEC'S CHOOSING), INDEMNIFY AND HOLD HARMLESS EEC, ITS DIRECTORS, OFFICERS AND ITS EMPLOYEES, PARENT COMPANY, AFFILIATE COMPANIES AND/OR SUBSIDIARIES, ITS SUCCESSORS AND ASSIGNS, CUSTOMERS AND USERS OF ITS PRODUCT(S) AGAINST ALL SUITS AT LAW OR IN EQUITY AND FROM DAMAGES, CLAIMS AND DEMANDS ARISING OUT OF THE DEATH OR INJURY TO ANY PERSON OR DAMAGE OF ANY KIND TO USER'S DIRECTORS, OFFICERS, EMPLOYEES, AGENTS OR PROPERTY AS A RESULT OF USER'S USE, MISUSE, ASSUMPTIONS OR INTERPRETATIONS OF THE TECHNICAL DATA CONTAINED HEREIN. EEC HAS MADE ITS BEST EFFORT TO OFFER THE MOST CURRENT, CORRECT AND CLEARLY EXPRESSED INFORMATION POSSIBLE. NEVERTHELESS, INADVERTENT ERRORS IN INFORMATION MAY OCCUR. IN PARTICULAR, BUT WITHOUT LIMITATION TO THE ABOVE, EEC DISCLAIMS ANY RESPONSIBILITY FOR TYPOGRAPHICAL ERRORS OR PUNCTUATION ERRORS CONTAINED HEREIN. EEC IS A REGISTERED TRADEMARK OF EEC. SIDPOL IS A REGISTERED TRADEMARK OF EEC. EDGE IS A TRADEMARK OF EEC. STARDRIVE IS A TRADEMARK OF EEC. EDRP-8 IS A TRADEMARK OF EEC. SMALL TARGETS: DUAL POLARIZATION RADAR SYSTEMS OFFERED BY EEC ARE COVERED BY ONE OR MORE OF THE FOLLOWING PATENTS: US 8,899,163; US 7,649,497; US 6,803,875; US 7,438,869; 13041 (CAP1 REGION); 13040 (CAP1 REGION); 13694 (CAP1 REGION); 009250 (EURASIA); 009249 (EURASIA). VARIOUS ADDITIONAL DOMESTIC AND INTERNATIONAL PATENTS HAVE BEEN APPLIED FOR.

**DRAWING INCOMPLETE  
WITHOUT FOLLOWING EO'S**

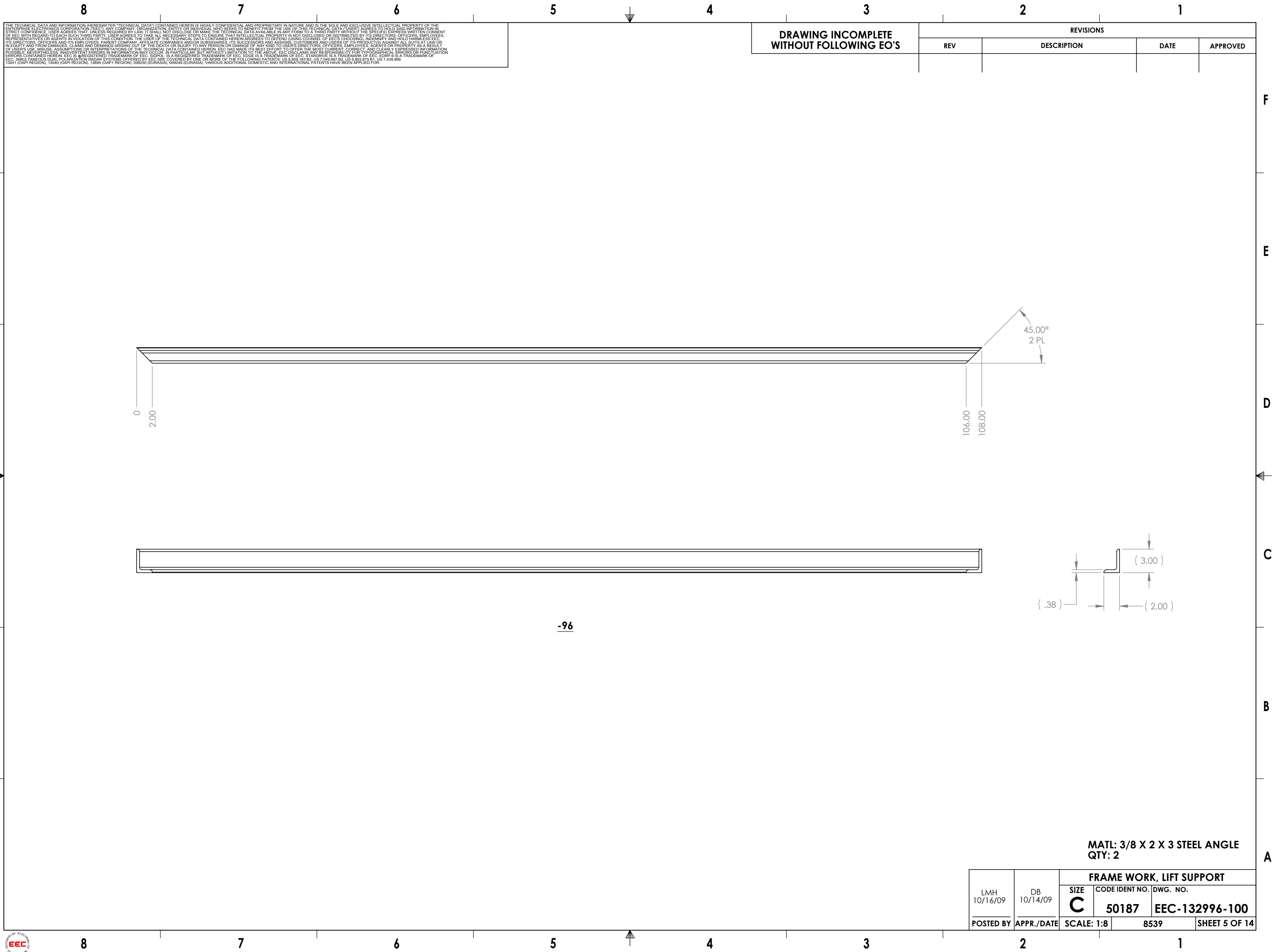
REVISIONS			
REV	DESCRIPTION	DATE	APPROVED

-97

**MATL: 3/8 X 2 X 3 STEEL ANGLE  
QTY: 2**

FRAME WORK, LIFT SUPPORT			
SIZE	CODE IDENT NO.	DWG. NO.	
<b>C</b>	<b>50187</b>	<b>EEC-132996-100</b>	
POSTED BY	APPR./DATE	SCALE: 1:8	8539 SHEET 4 OF 14





THE TECHNICAL DATA AND INFORMATION (HEREINAFTER "TECHNICAL DATA") CONTAINED HEREIN IS HIGHLY CONFIDENTIAL AND PROPRIETARY IN NATURE AND IS THE SOLE AND EXCLUSIVE INTELLECTUAL PROPERTY OF THE ENTERPRISE ELECTRONICS CORPORATION (EEC), ANY COMPANY, ORGANIZATION, ENTITY OR INDIVIDUAL WHO SEERS TO BENEFIT FROM THE USE OF THIS TECHNICAL DATA. USER AGREES TO HOLD SAID INFORMATION IN STRICT CONFIDENCE. USER AGREES THAT, UNLESS REQUIRED BY LAW, IT SHALL NOT DISCLOSE OR MAKE THE TECHNICAL DATA AVAILABLE IN ANY FORM TO A THIRD PARTY WITHOUT THE SPECIFIC EXPRESS WRITTEN CONSENT OF EEC. WITH REGARD TO SAID THIRD PARTY, USER AGREES TO TAKE ALL NECESSARY STEPS TO ENSURE THAT INTELLECTUAL PROPERTY IS NOT DISCLOSED OR OTHERWISE OBTAINED BY THE DIRECTORS, EMPLOYEES, REPRESENTATIVES OR AGENTS IN VIOLATION OF THIS CONDITION. USER OF THE TECHNICAL DATA CONTAINED HEREIN AGREES TO DEFEND (USING COURSE OF EEC'S CHOOSING), INDEMNIFY AND HOLD HARMLESS EEC, ITS DIRECTORS, OFFICERS AND ITS EMPLOYEES, PARENT COMPANY, AFFILIATE COMPANIES AND/OR SUBSIDIARIES, ITS SUCCESSORS AND ASSIGNS, CUSTOMERS AND USERS OF ITS PRODUCT(S) AGAINST ALL SUITS AT LAW OR IN EQUITY AND FROM DAMAGES, CLAIMS AND DEMANDS ARISING OUT OF THE DEATH OR INJURY TO ANY PERSON OR DAMAGE OF ANY KIND TO USER'S DIRECTORS, OFFICERS, EMPLOYEES, AGENTS OR PROPERTY AS A RESULT OF USER'S USE, MISUSE, ASSUMPTIONS OR INTERPRETATIONS OF THE TECHNICAL DATA CONTAINED HEREIN. EEC HAS MADE ITS BEST EFFORT TO OFFER THE MOST CURRENT, CORRECT AND CLEARLY EXPRESSED INFORMATION POSSIBLE. NEVERTHELESS, UNDEVERTENT ERRORS IN INFORMATION MAY OCCUR. IN PARTICULAR, BUT WITHOUT LIMITATION TO THE ABOVE, EEC DISCLAIMS ANY RESPONSIBILITY FOR TYPOGRAPHICAL ERRORS OR PUNCTUATION ERRORS CONTAINED HEREIN. EEC IS A REGISTERED TRADEMARK OF EEC. SIDPOL IS A REGISTERED TRADEMARK OF EEC. EDGE IS A TRADEMARK OF EEC. STARDRIVE IS A TRADEMARK OF EEC. EDRP-8 IS A TRADEMARK OF EEC. SMALL TARGETS: DUAL POLARIZATION RADAR SYSTEMS OFFERED BY EEC ARE COVERED BY ONE OR MORE OF THE FOLLOWING PATENTS: US 8,899,163; US 7,649,497; US 6,803,875; US 7,439,869; US 8,007,875; US 7,439,869; US 8,899,163; US 7,649,497; US 6,803,875; US 7,439,869; US 8,007,875; US 7,439,869. 13041 (CAPT REGION), 13040 (CAPT REGION), 13694 (CAPT REGION), 009250 (EURASIA), 009249 (EURASIA); VARIOUS ADDITIONAL DOMESTIC AND INTERNATIONAL PATENTS HAVE BEEN APPLIED FOR.

**DRAWING INCOMPLETE  
WITHOUT FOLLOWING EO'S**

REVISIONS			
REV	DESCRIPTION	DATE	APPROVED

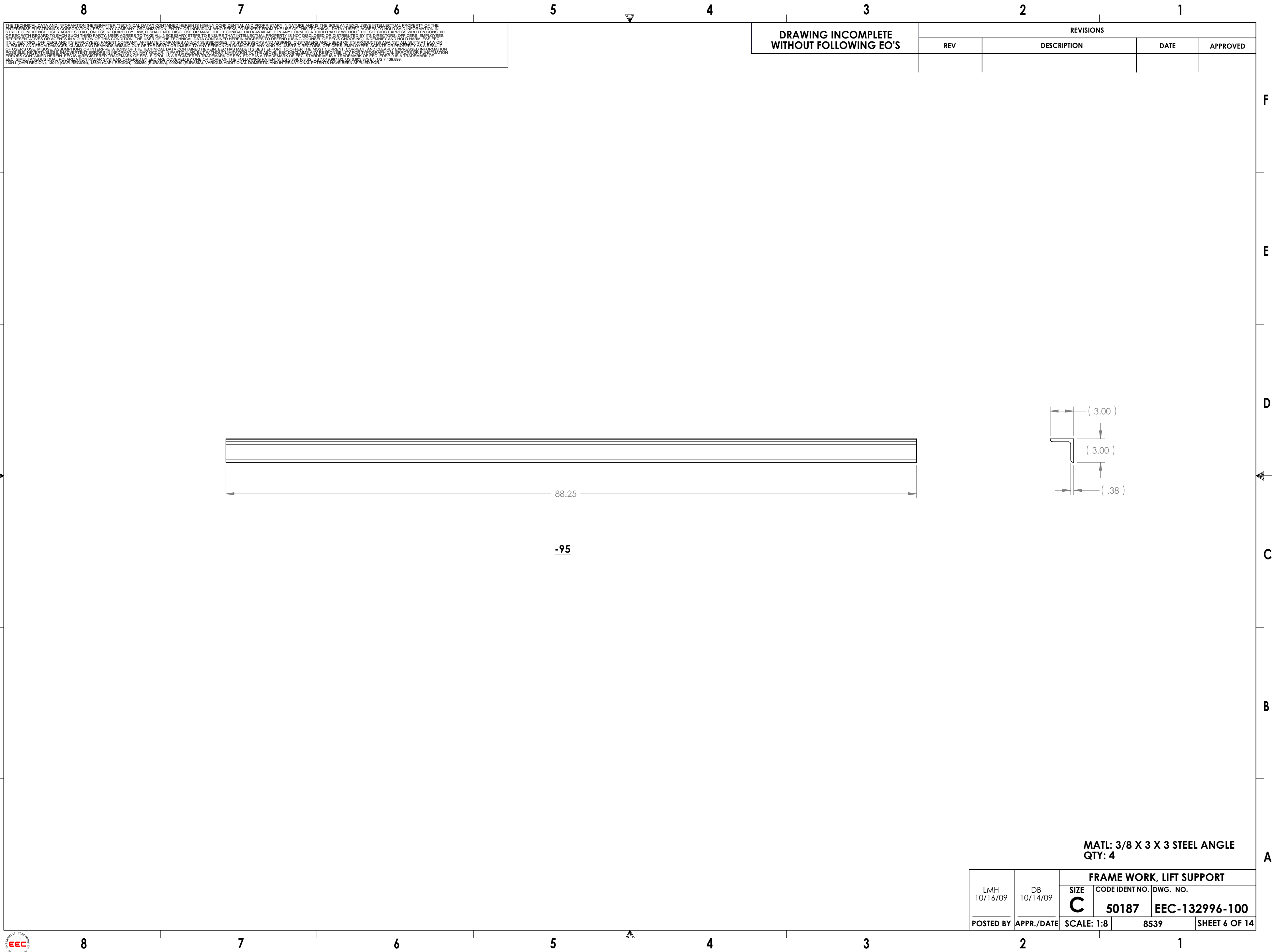
-96

**MATL: 3/8 X 2 X 3 STEEL ANGLE  
QTY: 2**

LMH 10/16/09	DB 10/14/09	<b>FRAME WORK, LIFT SUPPORT</b>	
POSTED BY	APPR./DATE	SCALE: 1:8	SHEET 5 OF 14
SIZE <b>C</b>		CODE IDENT NO. <b>50187</b>	DWG. NO. <b>EEC-132996-100</b>
8539			



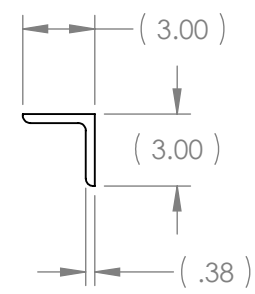




THE TECHNICAL DATA AND INFORMATION (HEREINAFTER "TECHNICAL DATA") CONTAINED HEREIN IS HIGHLY CONFIDENTIAL AND PROPRIETARY IN NATURE AND IS THE SOLE AND EXCLUSIVE INTELLECTUAL PROPERTY OF THE ENTERPRISE ELECTRONICS CORPORATION (EEC), ANY COMPANY, ORGANIZATION, ENTITY OR INDIVIDUAL WHO SEERS TO BENEFIT FROM THE USE OF THIS TECHNICAL DATA. USER AGREES TO HOLD SAID INFORMATION IN STRICT CONFIDENCE. USER AGREES THAT, UNLESS REQUIRED BY LAW, IT SHALL NOT DISCLOSE OR MAKE THE TECHNICAL DATA AVAILABLE IN ANY FORM TO A THIRD PARTY WITHOUT THE SPECIFIC EXPRESS WRITTEN CONSENT OF EEC. WITH REGARD TO SAID THIRD PARTY, USER AGREES TO TAKE ALL NECESSARY STEPS TO ENSURE THAT INTELLECTUAL PROPERTY IS NOT DISCLOSED OR DISSEMINATED BY THE DIRECTORS, EMPLOYEES, REPRESENTATIVES OR AGENTS IN VIOLATION OF THIS CONDITION. THE USER OF THE TECHNICAL DATA CONTAINED HEREIN AGREES TO DEFEND (THROUGH COUNSEL OF EEC'S CHOOSING) INDEMNIFY AND HOLD HARMLESS EEC, ITS DIRECTORS, OFFICERS AND ITS EMPLOYEES, PARENT COMPANY, AFFILIATE COMPANIES AND/OR SUBSIDIARIES, ITS SUCCESSORS AND ASSIGNS, CUSTOMERS AND USERS OF ITS PRODUCT(S) AGAINST ALL SUITS AT LAW OR IN EQUITY AND FROM DAMAGES, CLAIMS AND DEMANDS ARISING OUT OF THE DEATH OR INJURY TO ANY PERSON OR DAMAGE OF ANY KIND TO USER'S DIRECTORS, OFFICERS, EMPLOYEES, AGENTS OR PROPERTY AS A RESULT OF USER'S USE, MISUSE, ASSUMPTIONS OR INTERPRETATIONS OF THE TECHNICAL DATA CONTAINED HEREIN. EEC HAS MADE ITS BEST EFFORT TO OFFER THE MOST CURRENT, CORRECT AND CLEARLY EXPRESSED INFORMATION POSSIBLE. NEVERTHELESS, UNDETECTABLE ERRORS IN INFORMATION MAY OCCUR. IN PARTICULAR, BUT WITHOUT LIMITATION TO THE ABOVE, EEC DISCLAIMS ANY RESPONSIBILITY FOR TYPOGRAPHICAL ERRORS OR PUNCTUATION ERRORS CONTAINED HEREIN. EEC IS A REGISTERED TRADEMARK OF EEC. SIDPOL IS A REGISTERED TRADEMARK OF EEC. EDGE IS A TRADEMARK OF EEC. STARDRIVE IS A TRADEMARK OF EEC. EDSP-8 IS A TRADEMARK OF EEC. SMALL TARGETS DUAL POLARIZATION RADAR SYSTEMS OFFERED BY EEC ARE COVERED BY ONE OR MORE OF THE FOLLOWING PATENTS: US 6,899,163; US 7,049,497; US 6,803,875; US 7,438,869; 13041 (CAP1 REGION); 13040 (CAP1 REGION); 13694 (CAP1 REGION); 009250 (EURASIA); 009249 (EURASIA). VARIOUS ADDITIONAL DOMESTIC AND INTERNATIONAL PATENTS HAVE BEEN APPLIED FOR.

**DRAWING INCOMPLETE  
WITHOUT FOLLOWING EO'S**

REVISIONS			
REV	DESCRIPTION	DATE	APPROVED



-95

**MATL: 3/8 X 3 X 3 STEEL ANGLE  
QTY: 4**

FRAME WORK, LIFT SUPPORT				
POSTED BY	APPR./DATE	SCALE: 1:8	CODE IDENT NO.	DWG. NO.
LMH 10/16/09	DB 10/14/09		<b>C</b> 50187	EEC-132996-100
			8539	SHEET 6 OF 14

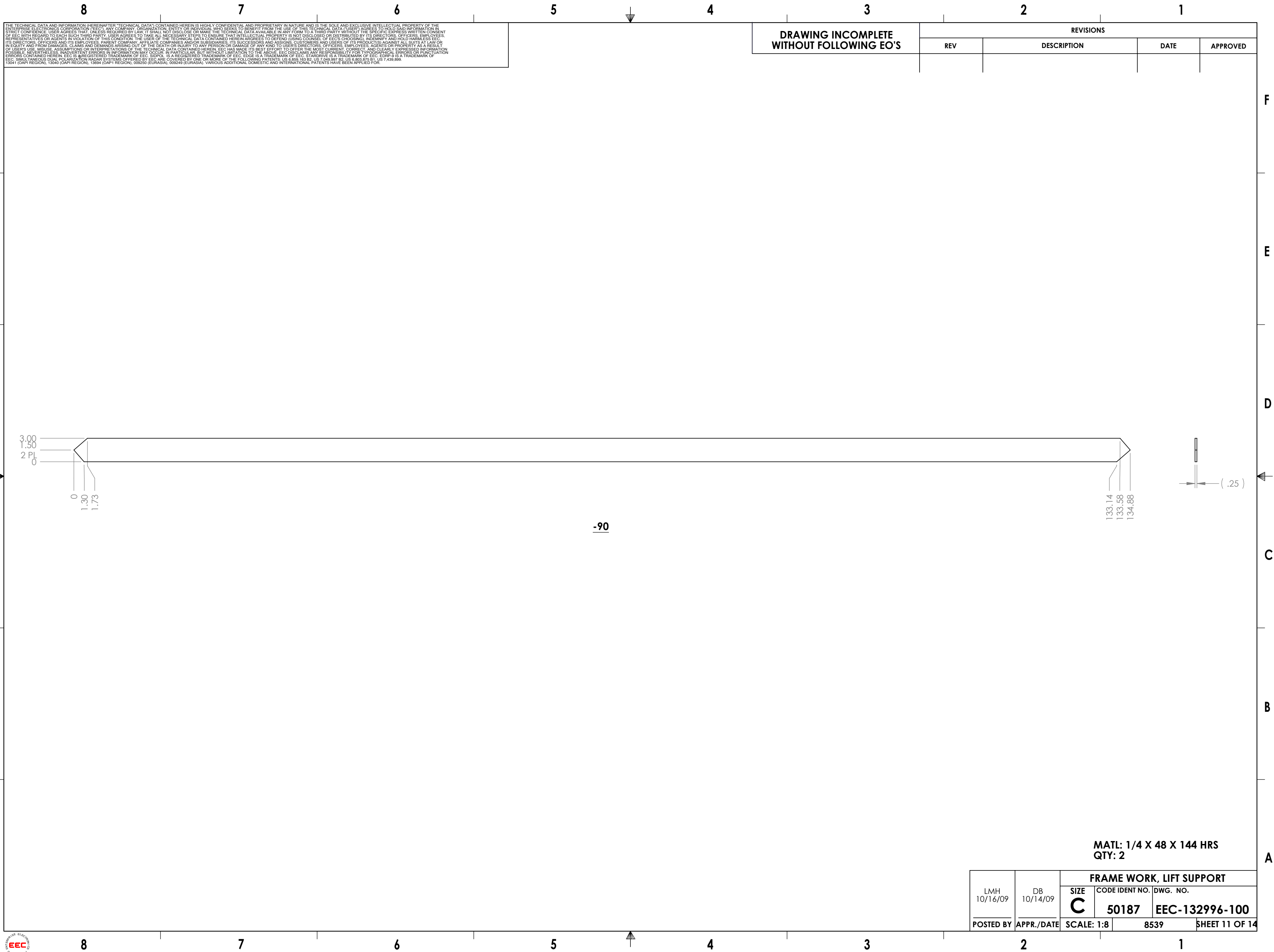






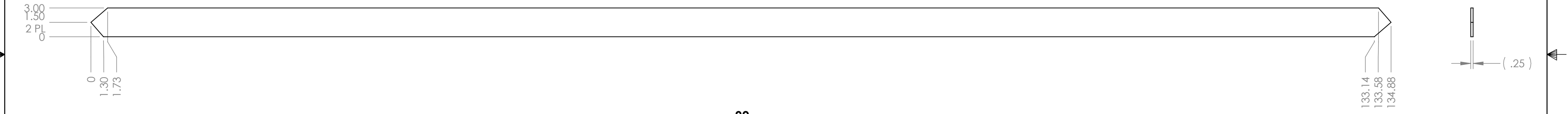






THE TECHNICAL DATA AND INFORMATION (HEREINAFTER 'TECHNICAL DATA') CONTAINED HEREIN IS HIGHLY CONFIDENTIAL AND PROPRIETARY IN NATURE AND IS THE SOLE AND EXCLUSIVE INTELLECTUAL PROPERTY OF THE ENTERPRISE ELECTRONICS CORPORATION (EEC), ANY COMPANY, ORGANIZATION, ENTITY OR INDIVIDUAL WHO SEERS TO BENEFIT FROM THE USE OF THIS TECHNICAL DATA. USER AGREES TO HOLD SAID INFORMATION IN STRICT CONFIDENCE. USER AGREES THAT, UNLESS REQUIRED BY LAW, IT SHALL NOT DISCLOSE OR MAKE THE TECHNICAL DATA AVAILABLE IN ANY FORM TO A THIRD PARTY WITHOUT THE SPECIFIC EXPRESS WRITTEN CONSENT OF EEC. WITH REGARD TO SAID THIRD PARTY, USER AGREES TO TAKE ALL NECESSARY STEPS TO ENSURE THAT INTELLECTUAL PROPERTY IS NOT DISCLOSED OR DISSEMINATED BY ITS DIRECTORS, OFFICERS, EMPLOYEES, REPRESENTATIVES OR AGENTS IN VIOLATION OF THIS CONDITION. THE USER OF THE TECHNICAL DATA CONTAINED HEREIN AGREES TO DEFEND (URING COURSE OF EEC'S CHOICE), INDEMNIFY AND HOLD HARMLESS EEC, ITS DIRECTORS, OFFICERS AND ITS EMPLOYEES, PARENT COMPANY, AFFILIATE COMPANIES AND/OR SUBSIDIARIES, ITS SUCCESSORS AND ASSIGNS, CUSTOMERS AND USERS OF ITS PRODUCT(S) AGAINST ALL SUITS AT LAW OR IN TORT AND FROM DAMAGES, CLAIMS AND DEMANDS ARISING OUT OF THE DEATH OR INJURY TO ANY PERSON OR DAMAGE OF ANY KIND TO USER'S DIRECTORS, OFFICERS, EMPLOYEES, AGENTS OR PROPERTY AS A RESULT OF USER'S USE, MISUSE, ASSUMPTIONS OR INTERPRETATIONS OF THE TECHNICAL DATA CONTAINED HEREIN. EEC HAS MADE ITS BEST EFFORT TO OFFER THE MOST CURRENT, CORRECT AND CLEARLY EXPRESSED INFORMATION POSSIBLE. NEVERTHELESS, INADVERTENT ERRORS IN INFORMATION MAY OCCUR. IN PARTICULAR, BUT WITHOUT LIMITATION TO THE ABOVE, EEC DISCLAIMS ANY RESPONSIBILITY FOR TYPOGRAPHICAL ERRORS OR PUNCTUATION ERRORS CONTAINED HEREIN. EEC IS A REGISTERED TRADEMARK OF EEC. SIDPOL IS A REGISTERED TRADEMARK OF EEC. EDGE IS A TRADEMARK OF EEC. STARDRIVE IS A TRADEMARK OF EEC. EDRP-8 IS A TRADEMARK OF EEC. SMALL TARGET DUAL POLARIZATION RADAR SYSTEMS OFFERED BY EEC ARE COVERED BY ONE OR MORE OF THE FOLLOWING PATENTS: US 6,899,163; US 7,049,497; US 6,803,875; US 7,439,869; 1304 (CAP1 REGION); 13040 (CAP1 REGION); 13694 (CAP1 REGION); 009250 (EURASIA); 009249 (EURASIA); VARIOUS ADDITIONAL DOMESTIC AND INTERNATIONAL PATENTS HAVE BEEN APPLIED FOR.

DRAWING INCOMPLETE WITHOUT FOLLOWING EOs		REVISIONS			
		REV	DESCRIPTION	DATE	APPROVED



MATL: 1/4 X 48 X 144 HRS  
QTY: 2

LMH 10/16/09	DB 10/14/09	FRAME WORK, LIFT SUPPORT		
POSTED BY	APPR./DATE	SIZE <b>C</b>	CODE IDENT NO. <b>50187</b>	DWG. NO. <b>EEC-132996-100</b>
		SCALE: 1:8	8539	SHEET 11 OF 14







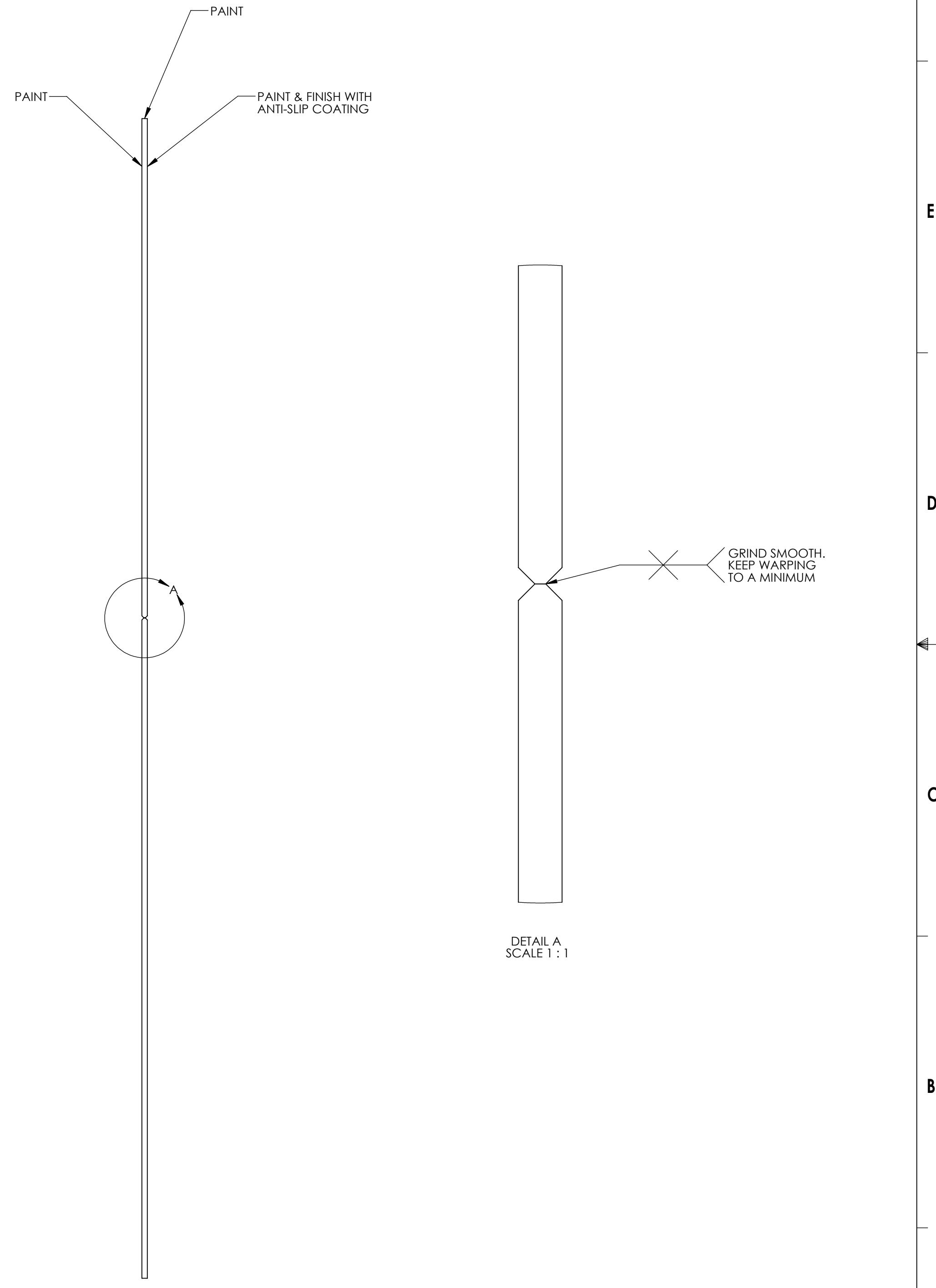
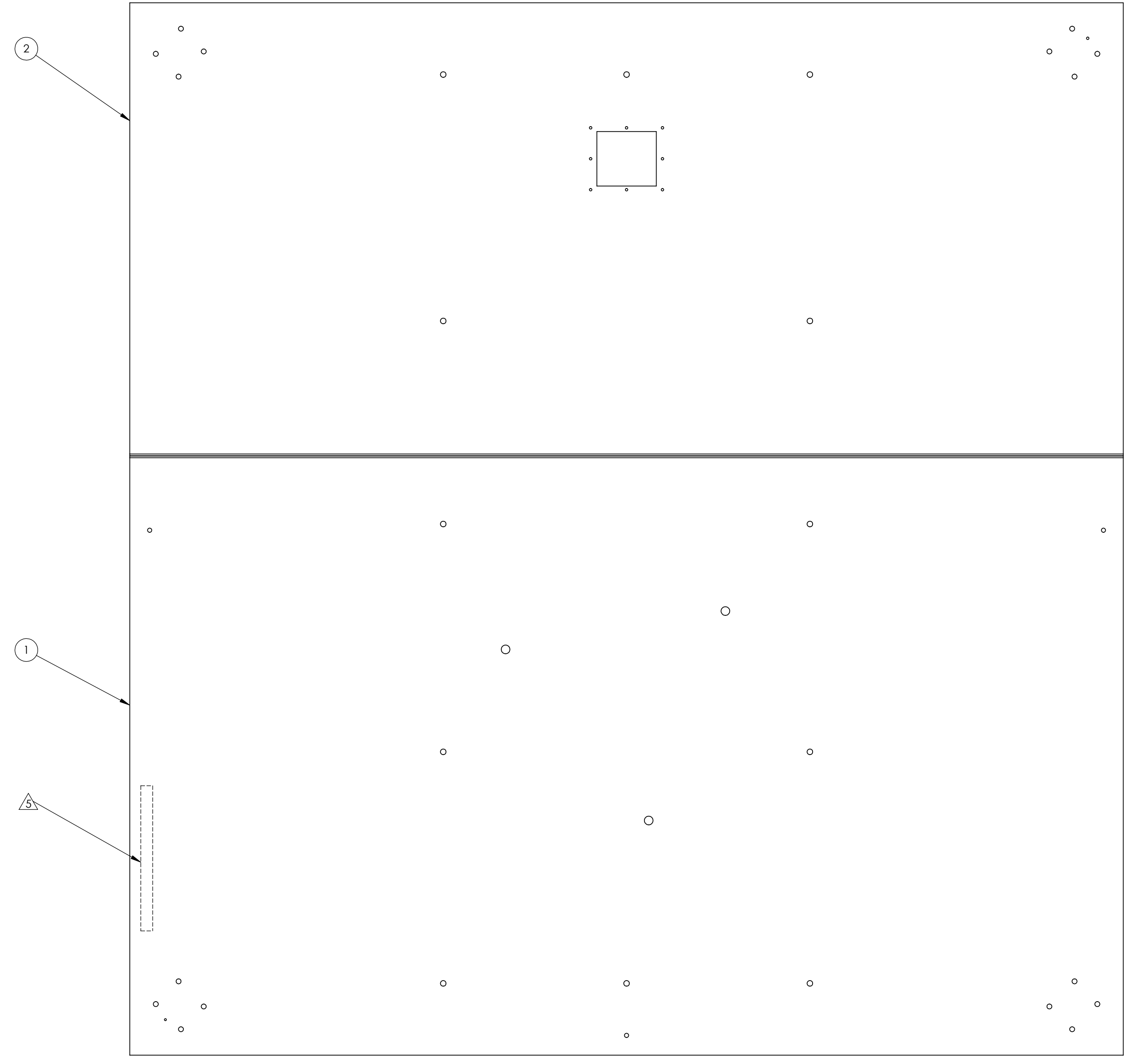




THE TECHNICAL DATA AND INFORMATION HEREIN ARE THE PROPERTY OF ENTERPRISE ELECTRONICS CORPORATION AND ARE NOT TO BE REPRODUCED OR TRANSMITTED IN ANY FORM OR BY ANY MEANS, ELECTRONIC OR MECHANICAL, INCLUDING PHOTOCOPYING, RECORDING, OR BY ANY INFORMATION STORAGE AND RETRIEVAL SYSTEM, WITHOUT THE WRITTEN PERMISSION OF ENTERPRISE ELECTRONICS CORPORATION. THIS DRAWING IS THE PROPERTY OF ENTERPRISE ELECTRONICS CORPORATION AND IS NOT TO BE REPRODUCED OR TRANSMITTED IN ANY FORM OR BY ANY MEANS, ELECTRONIC OR MECHANICAL, INCLUDING PHOTOCOPYING, RECORDING, OR BY ANY INFORMATION STORAGE AND RETRIEVAL SYSTEM, WITHOUT THE WRITTEN PERMISSION OF ENTERPRISE ELECTRONICS CORPORATION. THIS DRAWING IS THE PROPERTY OF ENTERPRISE ELECTRONICS CORPORATION AND IS NOT TO BE REPRODUCED OR TRANSMITTED IN ANY FORM OR BY ANY MEANS, ELECTRONIC OR MECHANICAL, INCLUDING PHOTOCOPYING, RECORDING, OR BY ANY INFORMATION STORAGE AND RETRIEVAL SYSTEM, WITHOUT THE WRITTEN PERMISSION OF ENTERPRISE ELECTRONICS CORPORATION.

REVISIONS			
REV	DESCRIPTION	DATE	APPROVED

- NOTES: UNLESS OTHERWISE SPECIFIED**
1. INTERPRET DIMENSIONS & TOLERANCES PER ASME Y14.5M-1994.
  2. IN ACCORDANCE WITH DOD-STD-100.
  3. REMOVE BURRS AND BREAK SHARP EDGES TO .005 TO .015 APPROX.
  4. FINISH PART USING EEC FINISH PROCESS SPECIFICATION EEC-127866-100.
  5. LABEL PART EEC-133464-100 USING .125 HIGH CHARACTERS.



REF DES.	DESCRIPTION	QTY	FINISH
-99	ALUM PL .500 THK, 6061-T651	1	PAINT
-98	ALUM PL .500 THK, 6061-T651	1	PAINT

UNLESS OTHERWISE SPECIFIED: DIMENSIONS ARE IN INCHES TOLERANCES: FRACTIONAL ± / ANGULAR ± MACH ± 1/2° TWO PLACE DECIMAL ± .03 THREE PLACE DECIMAL ± .010	DESIGNER E. RIVERS 2/4/10	DATE 2/04/10
CHECKER E. RIVERS 2/4/10	DESIGN ENGINEER E. RIVERS 2/4/10	PRODUCTION ENGINEER D. BRASWELL 2/5/10
QUALITY ASSURANCE D. BRASWELL 2/5/10	COOPERATION R. STEWART 2/3/10	APPROVAL L. HELVIN 2/05/10

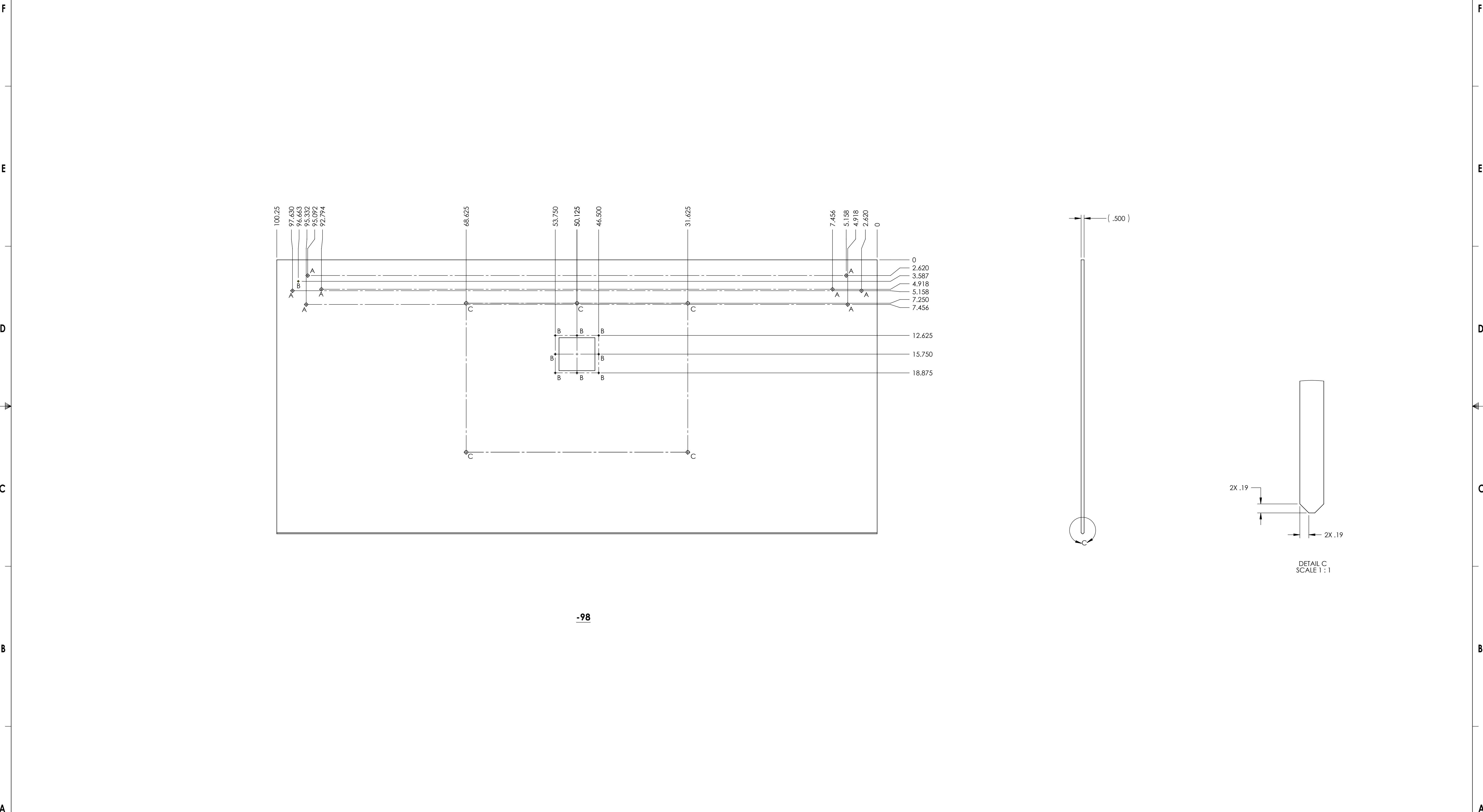
  

<b>EEC</b> ENTERPRISE ELECTRONICS CORPORATION ENTERPRISE, ALABAMA 36330	<b>PEDESTAL MOUNT PLATE ASSY</b>
SIZE <b>D</b> CODE IDENT NO. <b>50187</b> DWG. NO. <b>EEC-133464-100</b>	SCALE: 1:4 8539 SHEET 1 OF 3



THE TECHNICAL DATA AND INFORMATION HEREIN ARE THE PROPERTY OF THE COMPANY AND ARE NOT TO BE REPRODUCED OR TRANSMITTED IN ANY FORM OR BY ANY MEANS, ELECTRONIC OR MECHANICAL, INCLUDING PHOTOCOPYING, RECORDING, OR BY ANY INFORMATION STORAGE AND RETRIEVAL SYSTEM, WITHOUT THE WRITTEN PERMISSION OF THE COMPANY. THE COMPANY ASSUMES NO LIABILITY FOR ANY ERRORS OR OMISSIONS IN THIS DRAWING. THE USER OF THIS DRAWING SHALL BE RESPONSIBLE FOR VERIFYING THE DIMENSIONS AND TOLERANCES SHOWN HEREIN. THE COMPANY MAKES NO WARRANTY, EXPRESS OR IMPLIED, FOR THE ACCURACY OR COMPLETENESS OF THE INFORMATION CONTAINED HEREIN. THE COMPANY SHALL NOT BE RESPONSIBLE FOR ANY DAMAGES, INCLUDING CONSEQUENTIAL DAMAGES, ARISING OUT OF THE USE OF THIS DRAWING. THE COMPANY SHALL NOT BE RESPONSIBLE FOR ANY DAMAGES, INCLUDING CONSEQUENTIAL DAMAGES, ARISING OUT OF THE USE OF THIS DRAWING. THE COMPANY SHALL NOT BE RESPONSIBLE FOR ANY DAMAGES, INCLUDING CONSEQUENTIAL DAMAGES, ARISING OUT OF THE USE OF THIS DRAWING.

DRAWING INCOMPLETE WITHOUT FOLLOWING EO'S		REVISIONS		
REV	DESCRIPTION	DATE	APPROVED	



MATERIAL: AL PL .500 THK, 6061-T651  
QTY: 1

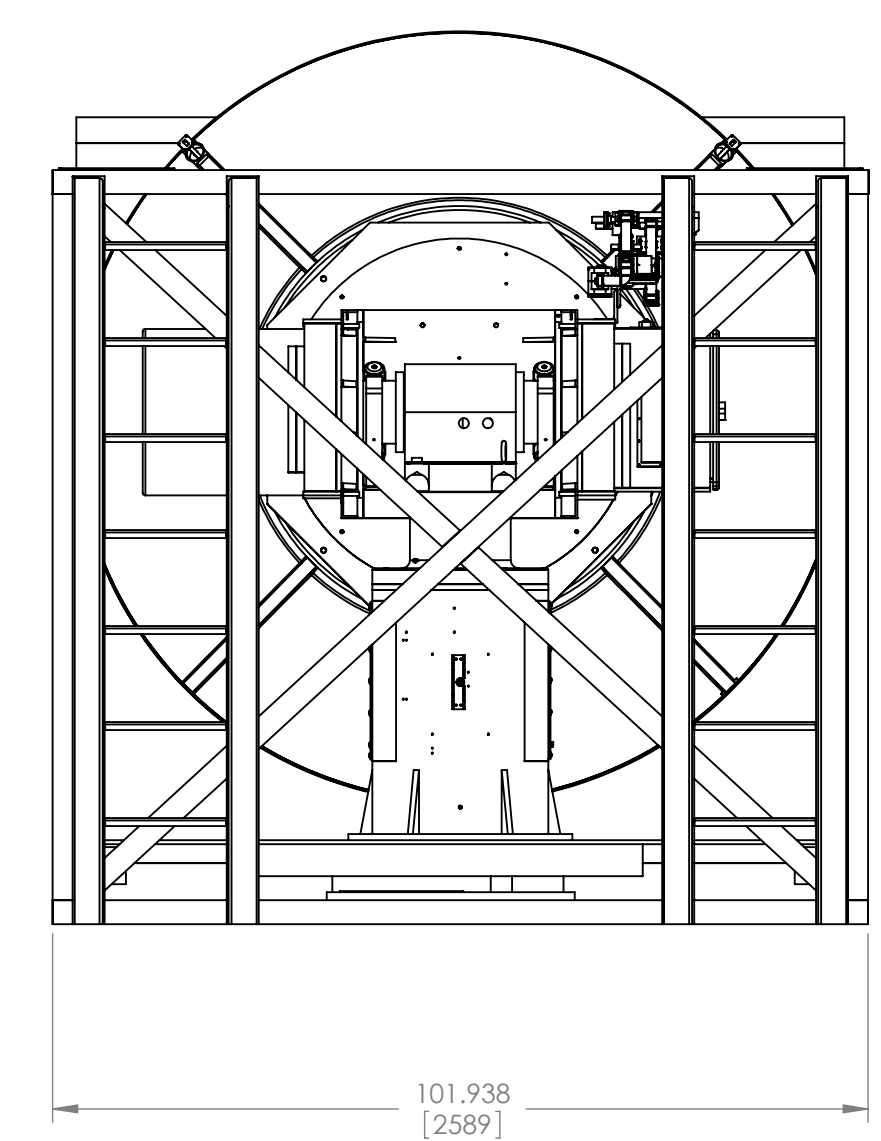
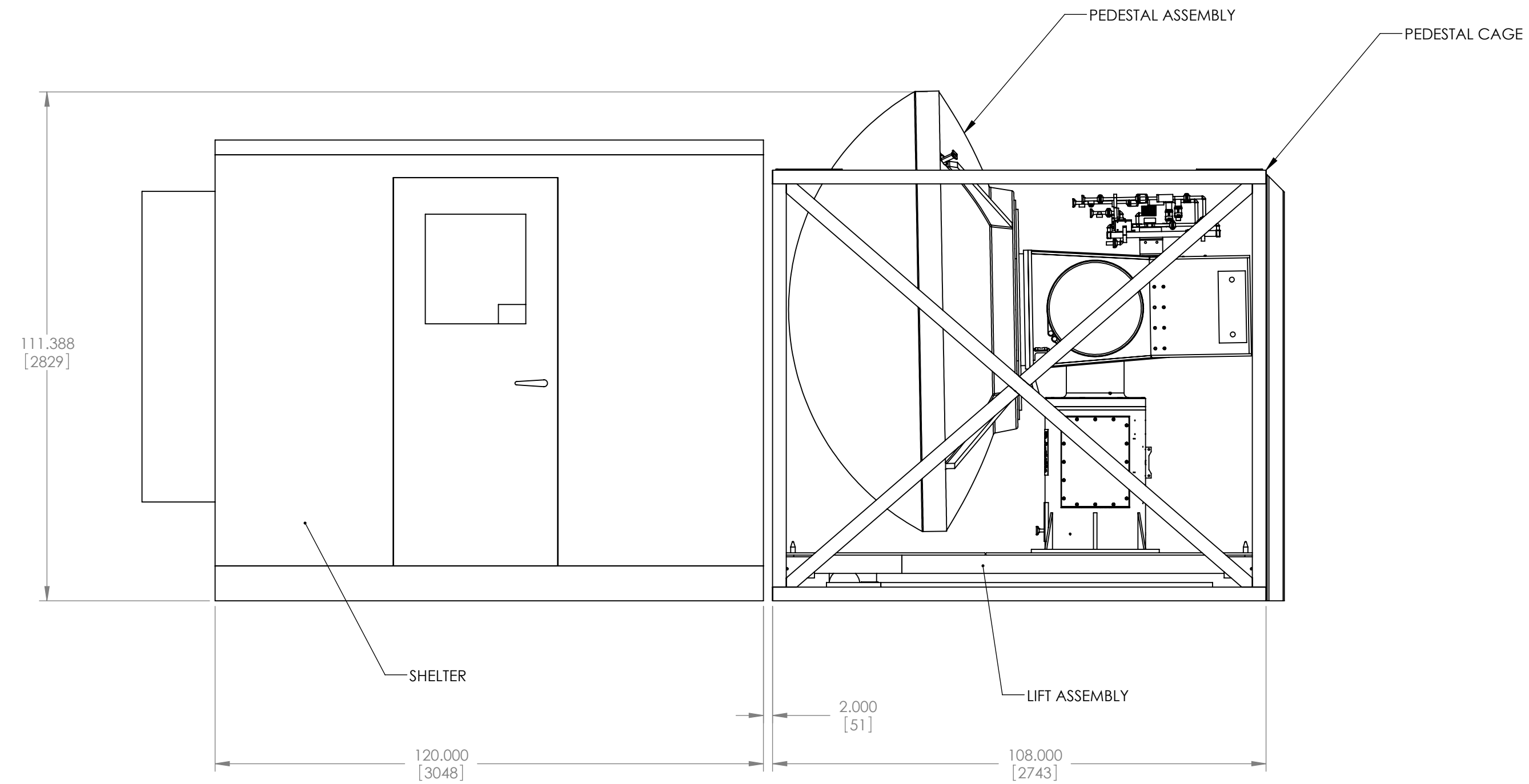
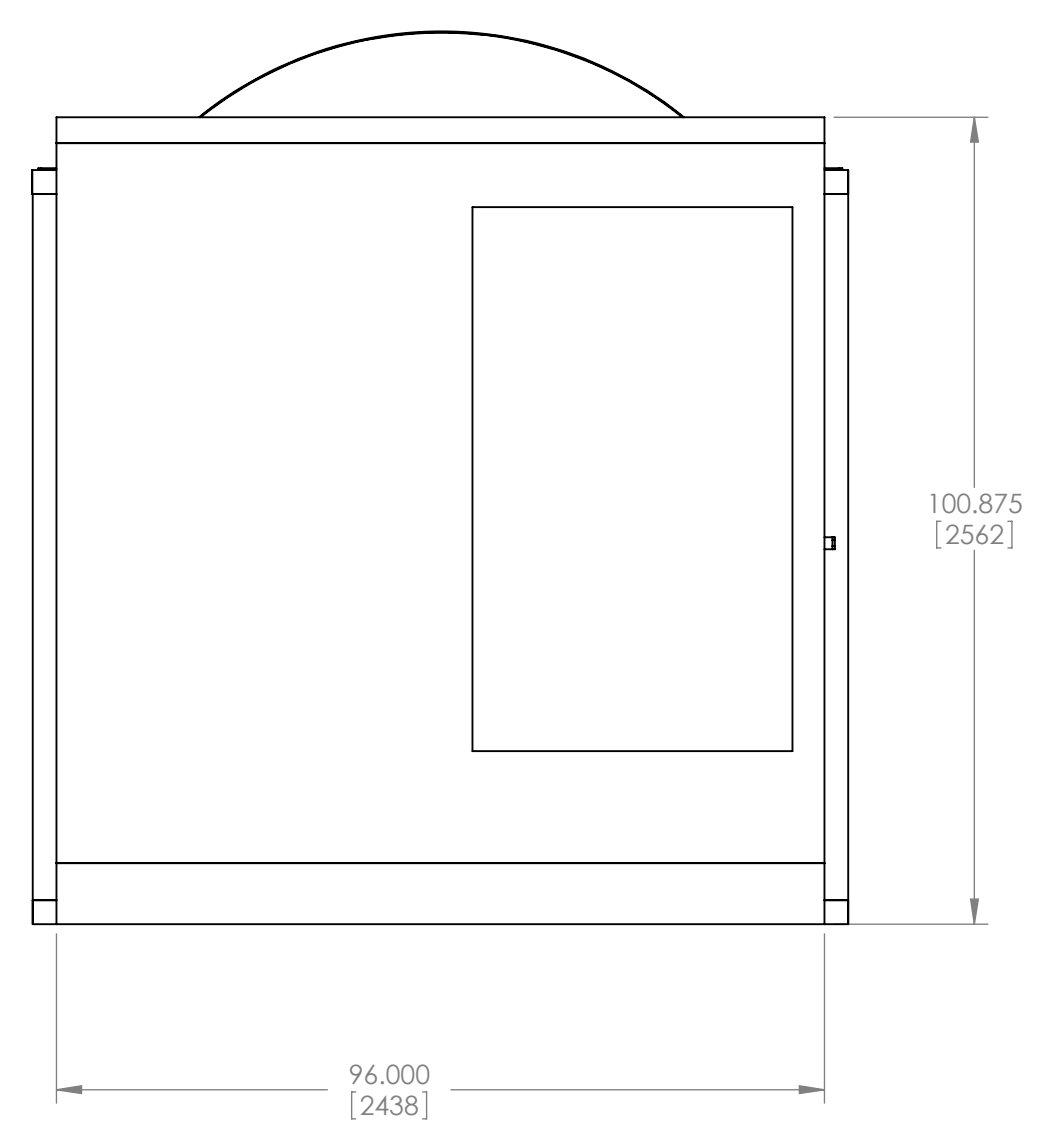
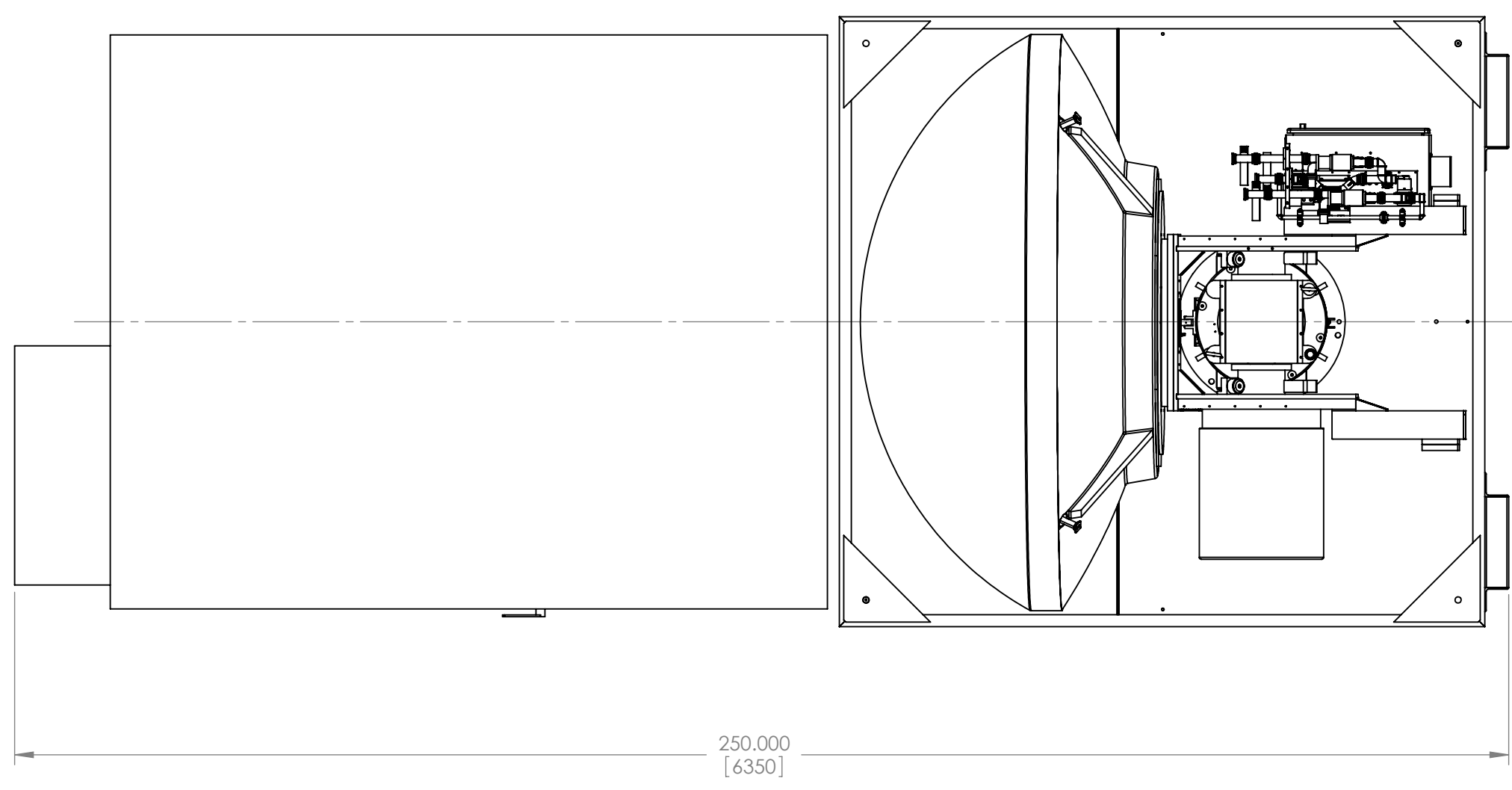
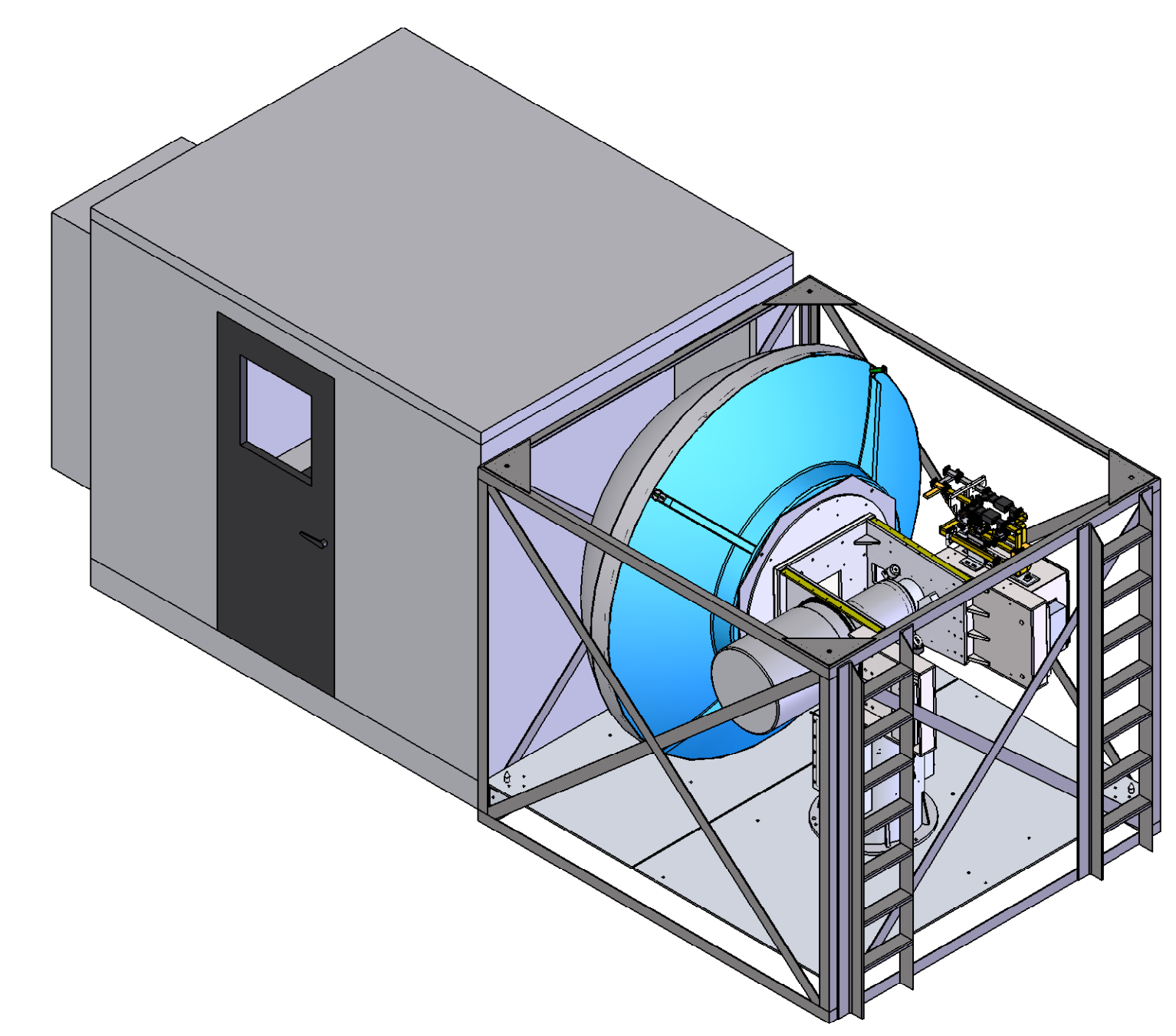
TAG	SIZE	QUANTITY	POSTED BY	APPR./DATE	SCALE: 1:8	8539	SHEET 3 OF 3
A	Ø .500 THRU	8	LH	2/05/10	ELR	2/04/10	
B	Ø .201 THRU	9					
C	1/4-20 UNC THRU	5					

PEDESTAL MOUNT PLATE ASSY		
SIZE	CODE IDENT NO.	DRAWING NO.
D	50187	EEC-133464-100

THE TECHNICAL DATA AND INFORMATION PRESENTED HEREIN IS HEREBY CONFIRMED TO BE TRUE AND CORRECT AND IS THE SOLE AND EXCLUSIVE PROPERTY OF THE ENTERPRISE ELECTRONICS CORPORATION. IT IS THE POLICY OF ENTERPRISE ELECTRONICS CORPORATION TO PROVIDE THE BEST QUALITY PRODUCTS AND SERVICES TO ITS CUSTOMERS. ANY REVISIONS TO THIS DRAWING MUST BE APPROVED BY THE DESIGN ENGINEER AND THE PROJECT MANAGER. ALL DIMENSIONS ARE IN INCHES UNLESS OTHERWISE SPECIFIED. ANY DIMENSIONS IN MILLIMETERS ARE IN BRACKETS. THE DRAWING IS THE PROPERTY OF ENTERPRISE ELECTRONICS CORPORATION AND IS TO BE USED ONLY FOR THE PROJECT AND LOCATION SPECIFICALLY IDENTIFIED HEREIN. IT IS NOT TO BE REPRODUCED, COPIED, OR TRANSMITTED IN ANY FORM OR BY ANY MEANS, ELECTRONIC OR MECHANICAL, INCLUDING PHOTOCOPYING, RECORDING, OR BY ANY INFORMATION STORAGE AND RETRIEVAL SYSTEM, WITHOUT THE WRITTEN PERMISSION OF ENTERPRISE ELECTRONICS CORPORATION. THE DRAWING IS THE PROPERTY OF ENTERPRISE ELECTRONICS CORPORATION AND IS TO BE USED ONLY FOR THE PROJECT AND LOCATION SPECIFICALLY IDENTIFIED HEREIN. IT IS NOT TO BE REPRODUCED, COPIED, OR TRANSMITTED IN ANY FORM OR BY ANY MEANS, ELECTRONIC OR MECHANICAL, INCLUDING PHOTOCOPYING, RECORDING, OR BY ANY INFORMATION STORAGE AND RETRIEVAL SYSTEM, WITHOUT THE WRITTEN PERMISSION OF ENTERPRISE ELECTRONICS CORPORATION.

DRAWING INCOMPLETE WITHOUT FOLLOWING E.O'S	REVISIONS			
	REV	DESCRIPTION	DATE	APPROVED

- NOTES: UNLESS OTHERWISE SPECIFIED**
- LAYOUT OF COMPONENT CONNECTIONS SUCH AS WAVEGUIDE AND PATHS WILL BE BASED ON THESE DIMENSIONS. ANY DEVIATIONS FROM THE DIMENSIONS SHOULD BE COMMUNICATED TO EEC ENGINEERING.
  - PRIMARY DIMENSION ARE IN INCHES. SECONDARY DIMENSIONS (XXXX) ARE IN MILLIMETERS.



DESIGNER	E. RIVERS	DATE	2/10/10
CHECKER			
DESIGN ENGINEER			
PROJECT ENGINEER			
QUALITY ASSURANCE			
CONFIGURATION			
DRAWING APPROVED BY			
APPROVAL			

<b>EEC</b> ENTERPRISE ELECTRONICS CORPORATION ENTERPRISE, ALABAMA 36330
PEDESTAL CAGE AND SHELTER LAYOUT
SIZE: <b>D</b> CODE IDENT NO: 50187 DWG. NO: EEC-SK-2156-01
SCALE: 1:24 8539 SHEET 1 OF 1

